

Oberwiesstrasse 50

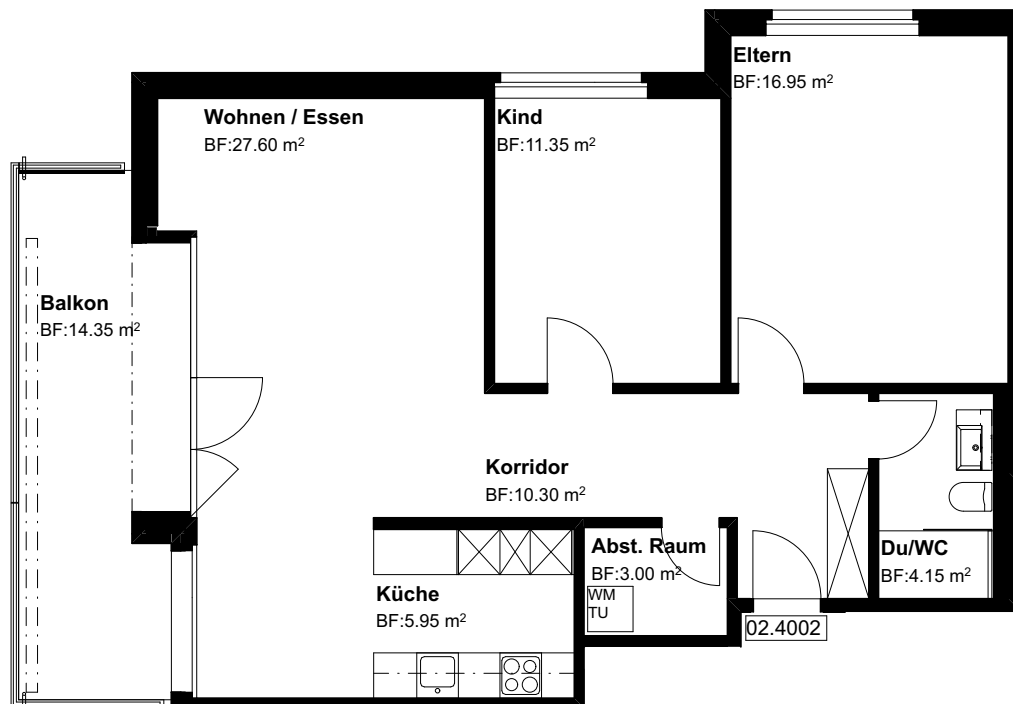
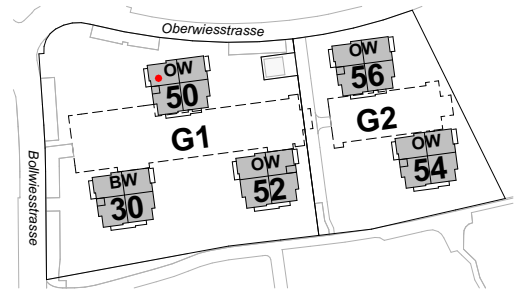
8645 Jona-Rapperswil

4.OG, 3.5 Zi-Whg

Nr. 02.4002

Fläche beheizt
Fläche unbeheizt
mit Lift

79.30 m²
14.35 m²



Grundriss Mst. 1:100
Änderungen bleiben vorbehalten

0 3m

